



**30 YEARS**  
**OF CHALLENGES**





Apr May Jun

#43



VHM



newsletter



30 YEARS  
OF DEDICATION



***30 years of***  
**Irreverence**



## Capelas Qualification Centre

### >>> Açores

The present proposal was prepared within the scope of the tender for the Acquisition of Services for the Implementation Project of the Construction Works of the Capelas Qualification Centre, an initiative framed within the national program, the Recovery and Resilience Plan (PRR).

The project for the Capelas Qualification Centre, born from this initiative, seeks to be a sensitive intervention to the existing historical, cultural and architectural context. The project, being guided by the principles of environmental, social and economic sustainability, aims to strengthen the commitment of the Autonomous Region of the Azores to sustainable development, in all its dimensions, also contributing to the development of the region.

The proposal presented consists of the requalification of a group of sixteen buildings. It was sought to preserve the image of the buildings that present traditional constructive solutions, these of greater architectural value. For the remaining buildings, most of them of industrial nature, we tried to reduce their impact and also to create, by the way their image is treated, a contrast with the others.

In what concerns the interior spaces of the buildings, a spatial and programmatic organization is foreseen, which guarantees a well articulated structure of accesses and vertical and horizontal circulations to all the areas and parts of each building. The project for the Capelas Qualification Centre, in general, meets the need and will of the Regional Secretariat for Public Works and Communications of the Autonomous Region of the Azores to create a paradigm of professional training in the region, with the aim of modernizing the existing infrastructure for the enhancement of training activity.



## Escola Superior de Saúde

### >>> Setúbal

The building was designed with a contemporary architecture, aiming to meet the educational and functional needs of the institution. With a total area of 5286m<sup>2</sup>, the building is distributed over 3 floors, providing an inspiring and suitable environment for the teaching and practice of health. The school is located in an easily accessible area, strategically positioned to serve both the academic and wider community. The chosen site provides efficient connections with other campus facilities as well as being situated in a pleasant urban environment.

The design adopts an architectural language, with simple lines and elegant geometric shapes. The building stands out for its harmony with its surroundings. The use of modern and sustainable materials contributes to a sophisticated and lasting aesthetic.

The School of Health is organised into three floors, which interconnect in a fluid and functional way. Each floor is designed to meet the specific needs of the educational programme, ensuring efficient circulation and a logical distribution of spaces.

The building includes classrooms, laboratories, library and study areas.

Each space was designed taking into account its specific function, ensuring maximum comfort and an atmosphere conducive to learning.

The School of Health has administrative and support areas that facilitate the efficient management of the institution.

These spaces include offices, meeting rooms, secretariat and rest areas.

To meet the specific needs of the health area, the building has special facilities such as simulation rooms, laboratories, nursing rooms, among others.

These spaces were designed with modern and technologically advanced equipment, ensuring excellence in teaching and professional practice.

The School of Health project was conceived taking into consideration principles of sustainability and energy efficiency. Passive design solutions were adopted, such as proper solar orientation, the use of natural lighting and cross ventilation, aiming to reduce energy consumption and promote the well-being of all.



## GNR - Lisbon Intervention Detachment

### >>> Alcabideche

The new building of the GNR Lisbon Intervention Detachment in Alcabideche barracks appears as a square volume of two floors, intersected by a circular wall that culminates in an amphitheatre on the roof. Singular in its implantation, it breaks with the orthogonality of the existing complex, turning it towards the city. It reads like a monolithic volume, torn by an irregular opening on the first floor, which translates into brightly lit rooms with differentiated ambiances. The level 0, of greater transparency, houses common areas and general services of the barracks, with a greater relationship with the exterior. With a total area of 1250m<sup>2</sup>, a new identity emerges, in the centre of Alcabideche.



## Students Residence

### >>> Sines

The project of the "Students' Residence" located in Sines, has a gross area of 1,134.51 m<sup>2</sup>. The aim of this development is to provide a suitable environment to accommodate students from the Polytechnic Institute of Setúbal, offering a modern and functional infrastructure that promotes the study, socialising and well-being of the residents.

The Residence is composed of two floors, designed to integrate harmoniously with the existing urban landscape. Its contemporary architecture features simple lines and facades clad with durable and aesthetically pleasing materials.

The building's functional program was carefully designed to meet the students' needs, providing comfort, privacy and common areas for social interaction.



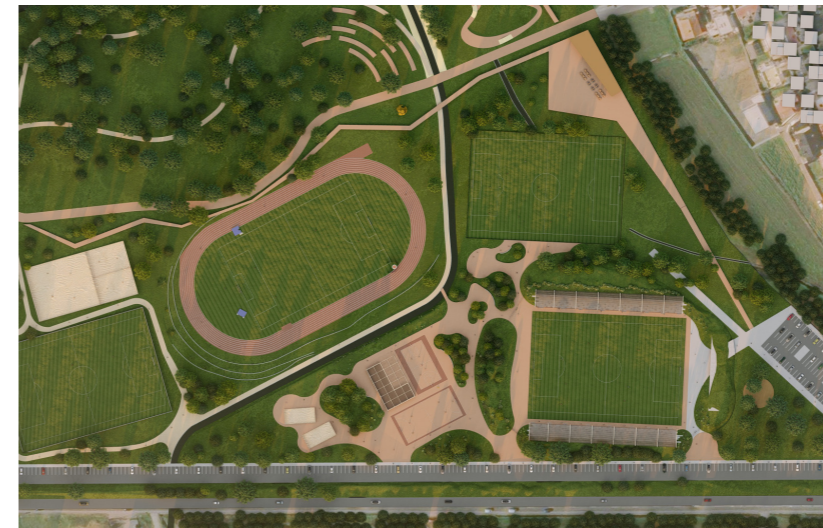
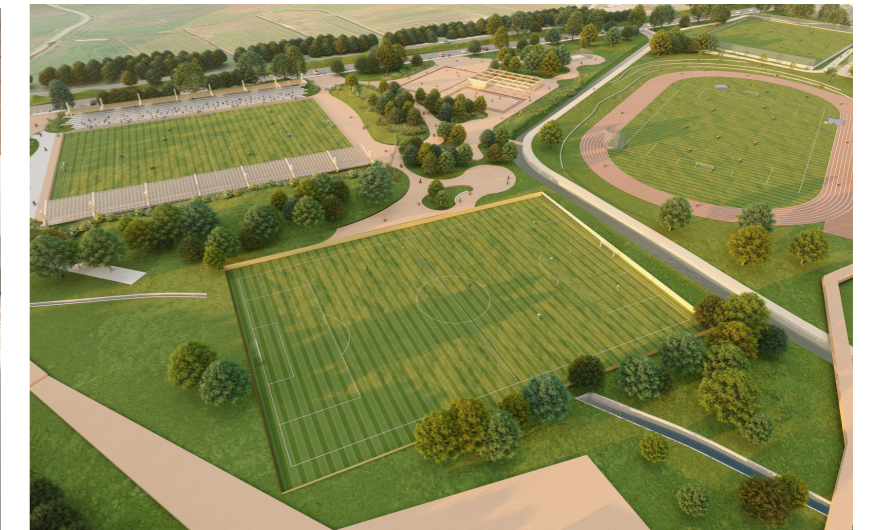
## Municipal Sports Park

### >>> Esposende

The “Parque Desportivo Norte” in Esposende is a comprehensive architectural project, divided into three distinct zones: Sports Park (zone A), Recreational Park (zone B) and Recreational Park (zone C). With a total area of 280,281m<sup>2</sup>, the park was designed to offer a wide range of sports, recreational and leisure facilities, meeting the diverse needs and interests of the community. Zone A, the Sports Park, is the heart of the project and includes football pitches, athletics track, futsal, basketball, paddle tennis, beach volleyball and a climbing wall. These facilities provide varied and attractive sporting options for visitors. Zone B, the Recreational Park, offers leisure activities and contact with nature. Highlights include the Orienteering Race Centre, the requalification of the water lines and the natural ponds, which provide a serene environment. Sitting areas, shaded areas and a Pump Track complement this zone.

In zone C, the Recreational Park, a children’s/sports park and an Experience Park with urban facilities are found. These areas offer fun and entertainment for all ages, encouraging interaction and creativity. Sitting areas and shaded areas are also provided for the comfort of visitors.

The “Parque Desportivo Norte” is a complete and integrated space, aimed at promoting an active, healthy and communal lifestyle. With its high quality sports facilities, leisure areas and interaction with nature, the park is a meeting and entertainment place for the residents of Esposende and its surroundings.







# *30 years of* Hard Work

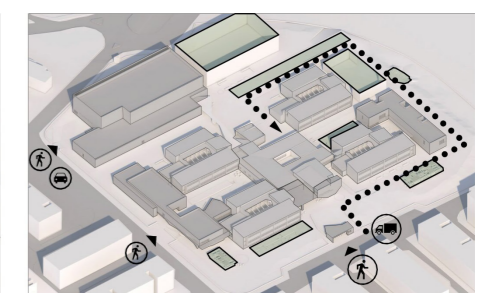
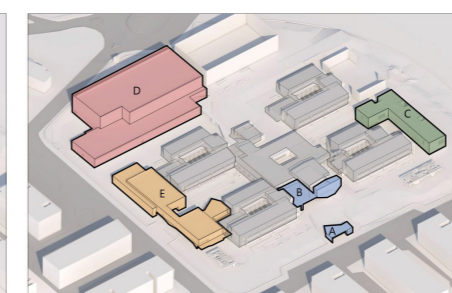
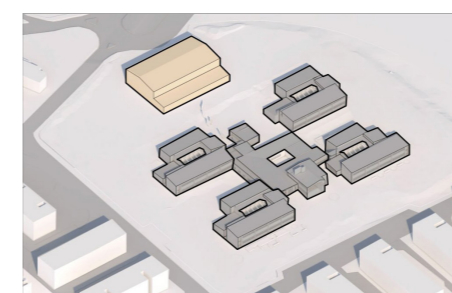
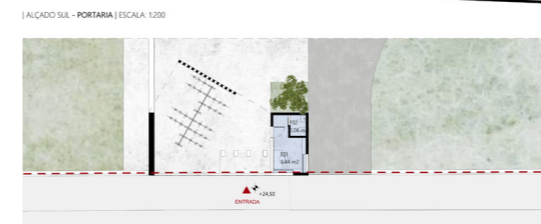
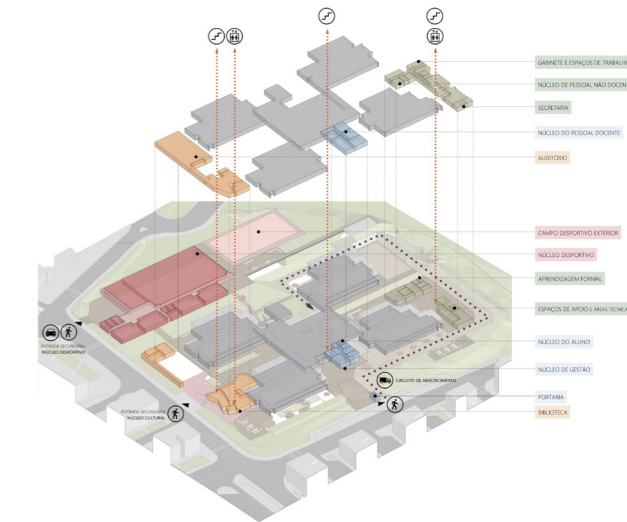
Project   
▼  
Public Contests



# S. João Estoril Secondary School

>>> Estoril

The proposal presented intends to give the built agglomeration a new identity, more consolidated and modern with a strong public sense, takes advantage of the privileged view over the park, serving as a backdrop to both indoor and outdoor spaces. The treatment of the exteriors intends to enhance and stimulate its use through the creation of diversified spaces, some of them covered and others overgrown, designed to serve as living and recreation areas, but also as areas for practical and theoretical classes, or even workshops and other events more directed to the community. The implementation of the new building volumes took several premises into consideration, namely functional organisation, solar orientation and the desire to consolidate the outdoor spaces. With the extension of the administrative building and the creation of a large covered canopy next to the entrance of the existing complex. The requalification of this entrance allows the existing and proposed complex to be understood as a whole, in which the modern and innovative communicate with respect and harmony with the pre-existing. To the west, using the two pre-existing entrances, we find the building of the sports centre and the cultural centre, both prepared to welcome not only the school community but also the community in general. Their implantation favours communication with the exterior, approaching the limits of the plot in a subtle desire to stand out in the landscape, giving back to the whole its centrality. To the east is the Administrative Nucleus, whose exterior and interior areas benefit from the proximity and the view over the Quinta da Carreira. With simple forms, using colour, the proposed complex integrates the pre-existing building, qualifies the exterior areas and marks its presence, accentuating its centrality.



# Traquina Children's Centre

## >>> Queijas

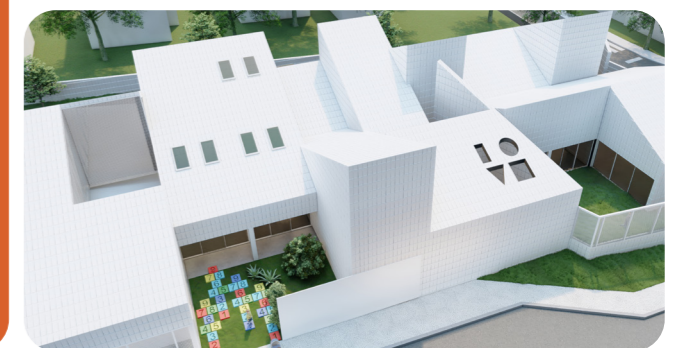
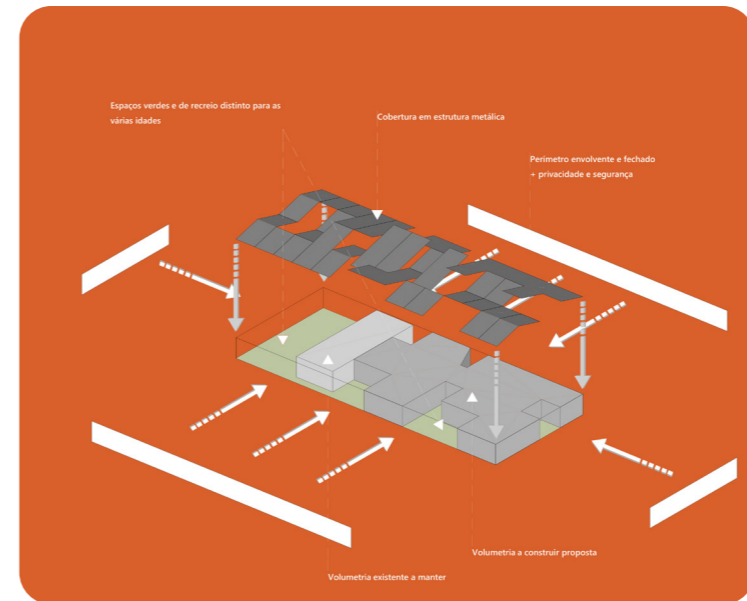
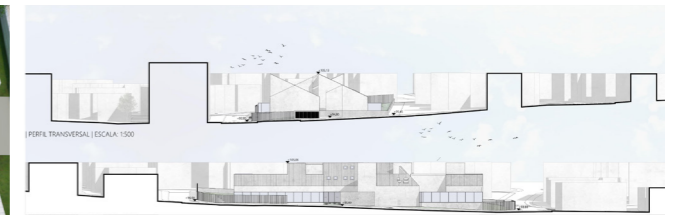
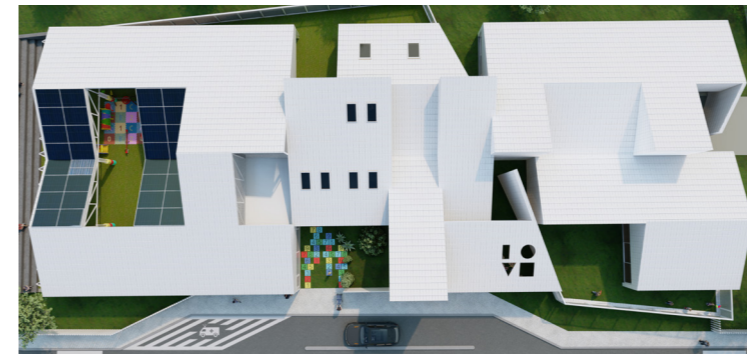
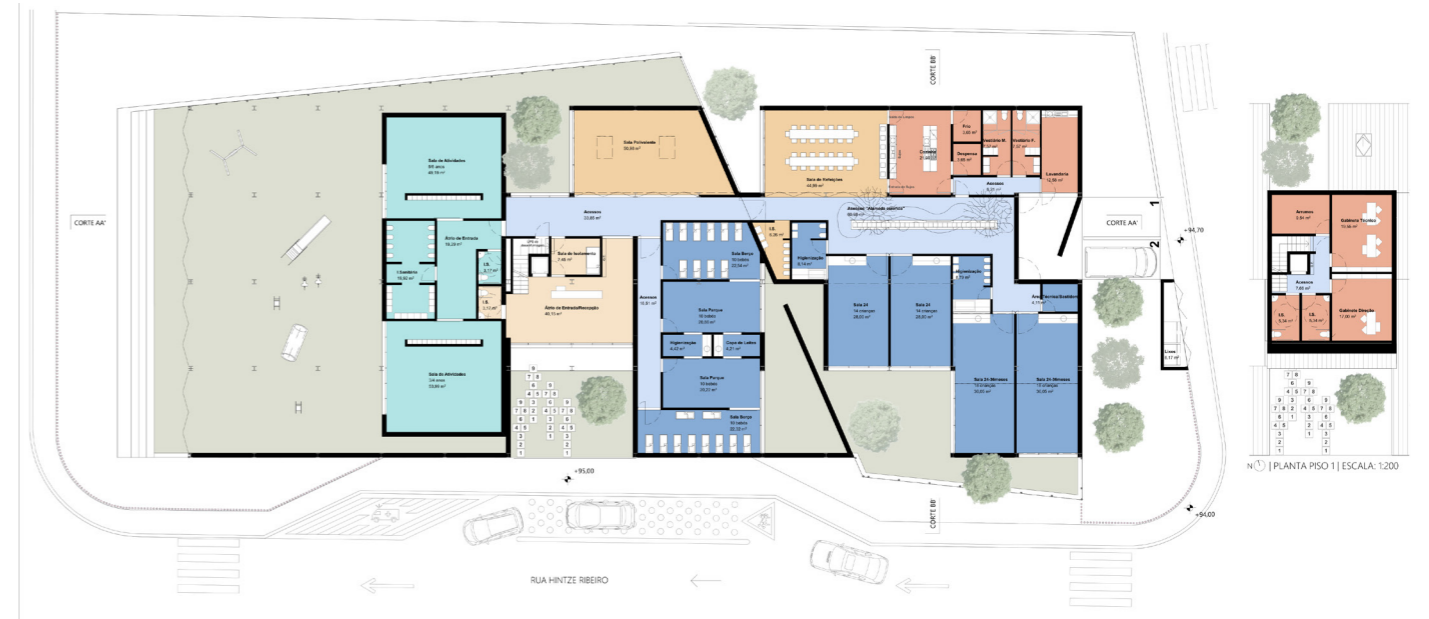
The project consists in the creation of a children's centre for family and child support from nursery to 6 years old.

The main premise on which the proposal was based was the safety and privacy of the children, creating an environment conducive to healthy growth and stimulation.

In this sense, it was decided to construct the building at the maximum distance from the plot, creating large courtyards facing inwards. The volumetry results from this intention of creating voids in a unique and solid volumetry that embraces the existing building, incorporating it and making it an integral part of a whole.

It was also the intention to create a rich and dynamic covering that would involve the whole proposal and create covered recreational spaces. This covering, in a metallic and light structure that presents forms of inclined covering out of phase with each other as if it were a game of waves.

This game also refers to a combination of simple and pure geometric shapes (triangles, rectangles and squares) very present in the first didactic learning and stimulation games. The choice of exterior finishes was with the intention of giving this formality of solids a very striking image and directed to the perception of form by form, i.e., all materials chosen are of the same tonality so that there is no deconcentration to non-formal elements.



>>>

>>>



# *30 years of* Rigor

Supervision 



north > centre > south/islands



VHM is responsible for the design, supervision and safety coordination of the adaptation of the existing building for the new facilities of the Research Centre and Laboratories of FhP-AWAM - "Fraunhofer Portugal Research Center for Smart Agriculture and Water Management", located at Regia Douro Park, in Vila Real, carried out by the Owner Fraunhofer. The work is currently in the phase of assembly of technical facilities.



VHM is responsible for the coordination and supervision of the work "Recovery of the Largo Abel Salazar Building - Rectory and ICBAS Facilities", located in Largo Abel Salazar. The proposed intervention aims to adapt the emblematic building for the installation of the services of the Rectory of the University of Porto as well as the Clinical Teaching of the Institute of Biomedical Sciences Abel Salazar of the University of Porto. Besides aiming to meet the functional needs of these two institutions, the intervention corresponds to a comprehensive review of the support infrastructures (hydraulic, electrical, mechanical).



## Royal Super Car Hotel

>>> Vila Verde

VHM is responsible for the Supervision and Safety Coordination of the construction of the new Royal Super Car Hotel.

The concept for this project has a unique, innovative and cultural character, which is essentially related to the combination of three words: motoring, hospitality and luxury.

The aim is to create a luxurious space for "car lovers", where it is possible to rent a room with stunning views, enjoy a space with a palatial architecture, either to sleep or just to attend the club or dinner, rent a high cylinder car, or just enjoy a unique collection of cars.

In short, the proposal aims to combine the areas of Hospitality, Catering, Car Club, Conference Centre and Events, to reach a high class target audience, nationally and internationally, with selective access.



north

## Antas Atrium Development

>>> Porto

VHM is responsible for the Supervision and Safety and Environment Coordination of the works relating to Lot 1 of the Antas Atrium Development, which is in the conclusion phase.

It is a residential and services building consisting of 12 floors above ground for mixed residential and commercial use and 3 floors below ground for parking and technical areas.

The plot has an area of approximately 4,000.00 m<sup>2</sup> and is located on the site of the former Antas Stadium.



## Continente Bom Dia Opening

### >>> Francelos

VHM carried out the supervision of the building contract of a building composed by three commercial units: a Continente Bom Dia supermarket, a WELLS parapharmacy and a third unit for commerce, services, restaurants and drinks.

The building's main finish is the prefabricated panel, in white concrete, on the ground floor. Floor 1 will have, in the above ground area, an external coating in aluminium slatted panels. In addition, the contract included Urbanisation Works in the surroundings of the commercial building, namely, the execution of the respective accesses and the pedestrian walkways surrounding the plot and interventions in the Electrical Infrastructure Network, Water Supply Network, Domestic Wastewater and Rainwater Drainage Network and Gas Network.



north

## GoPorto - Ruins Quinta Salgueiros

### >>> Porto

VHM is responsible for the Coordination and Supervision of the contract works to stabilise the Ruins of Quinta de Salgueiros, with intervention in the House and Chapel, with the execution of the horizontal blocking of the masonry walls and the cleaning and treatment of the walls, so that all the existing vegetation is eliminated and the joints and cracks are repaired. An intervention in the existing stone masonry walls is also planned, as well as the placement of exterior fencing of the entire area.





## Expansion of the Siemens Gamesa Industrial Unit

>>> Vagos

The VHM carried out the Supervision, Safety Coordination and Environmental Monitoring of the contract works "Expansion of the Industrial Unit of Siemens Gamesa" in Vagos, having the work begun in May 2022 and completed in March 2023, meeting the deadline set for the execution of the same - 10 months.

The contract works consisted in the enlargement of the Manufacturing Unit, construction of a new pavilion with 18m of height, construction area - 6.675m<sup>2</sup> and Lot Area - 20.850m<sup>2</sup>.

The adjoining volume is occupied by technical and personal facilities and the factory pavilion is exclusively dedicated to production.



centre

## Machado de Castro National Museum, Façades, Conservation and Restoration of the Loggia and the Staircase Courtyard

>>> Coimbra

VHM was selected by the City Council of Coimbra to provide the services of Supervision and Coordination of Safety at Work in the Machado de Castro National Museum (UNESCO heritage), Façades, Conservation and Restoration of the Loggia and Patio Staircase.

The general aim of the intervention is to achieve a physicochemical balance of the materials, as well as a balanced and harmonious finish, that does not alter or disturb the historical, documental and aesthetic reading of the ensemble.

Thus, the most important actions are those that are not very intrusive, necessary to stabilise and delay the alteration of the materials, in order to improve their resistance to the agents of degradation and obtain a homogeneous view of the stone surfaces and the wooden ceiling.



## Work IP - Mondego Mobility System (SMM)

### >>> Coimbra

VHM continues to develop the Provision of Services "Supervision and Coordination of on-site safety in the SMM construction work - Portagem - Alto De São João section - Adaptation of the infrastructure to BRT, adductor of boa vista and rainwater drainage of the Arregaça Valley" in the city of Coimbra. The Contract focuses on the conversion of the old railway branch of Lousã and the urban area of Coimbra to implement a Metrobus type Mobility solution. This is a road solution that appears as an alternative to the railway solution initially foreseen.

The Mondego Mobility System (SMM) includes interventions of different nature divided in three sections. The section awarded to VHM corresponds to Coimbra Urban Area and begins just before the toll station and ends in Alto de S. João. It is characterised by having 10 stops, for using a dedicated channel on the old railway line (with the exception of the so-called Solum variant), being approximately 5.2 km long, with a width of 7.00 m, two-way traffic lane, maximum speed of 50 km/h and priority for the Metrobus at all level crossings.



centre

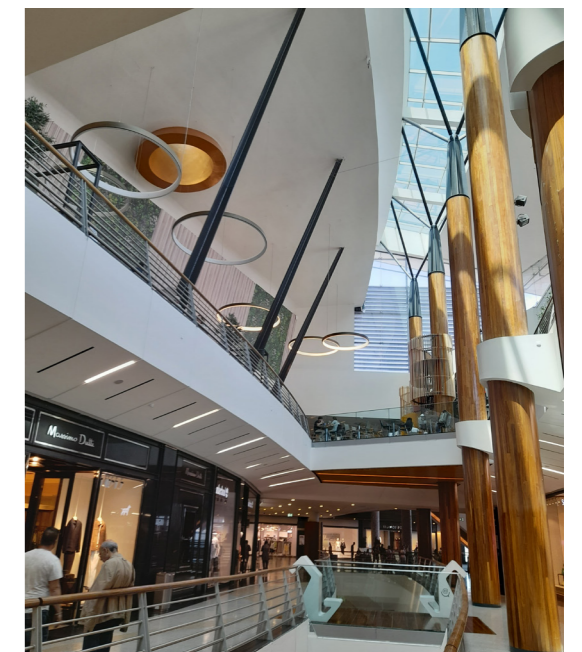
## Fórum Coimbra - Refurbishment

### >>> Coimbra

VHM's intervention in Fórum Coimbra took place last year in the remodelling of the entire restaurant floor where false ceilings were remade, walls covered, new flooring applied to the entire area, lighting and ventilation, new furniture and the installation of a children's playground.

All the work was carried out at night.

During the current year VHM was chosen to accompany the remodelling of all the Mall's and Squares, giving continuity to the work of the previous year, with these works focusing on the reformulation of wall coverings, false ceilings, ventilation and lighting.



## Continente Modelo Refurbishment

### >>> Grândola

The refurbishment of Continente Modelo de Grândola began on 16/01/2023, with intervention targets for most of the building, namely: customer service areas (bakery, fishmonger's, delicatessen and butcher's), the service counter, fruit and vegetable area and shelves. Also of note is the creation of a "Beauty" area, the complete replacement of the cold storage equipment, as well as the respective central unit, and the replacement of all the lighting in the shop. At the level of the car park, the shading structures were removed and a photovoltaic system for the production of electrical energy is being implemented.

VHM is responsible for the Supervision and Coordination of the various Contracts, as well as for the management of Sonae MC's suppliers.



## south/ island

## Lot 33 Fábrica 1921

### >>> Lisboa

In the old Textile Factory, Simões e Companhia in Benfica, the closed real estate investment fund TDF, promoted the construction of the undertaking known as Factory one thousand nine hundred and twenty one, consisting of Lot thirty two, and Lot thirty three. Of which L32 is already concluded and L33 in the initial phase of finishing and specialities.

Lot 33 consists of six buildings with eighty-two fractions for Habitation.

It will also have five fractions for commerce on Level 0 and the basement with two levels will be the residents' car park, where the storage rooms and technical areas of the development will be located.

An emblematic work for the city of Lisbon and the Benfica neighbourhood

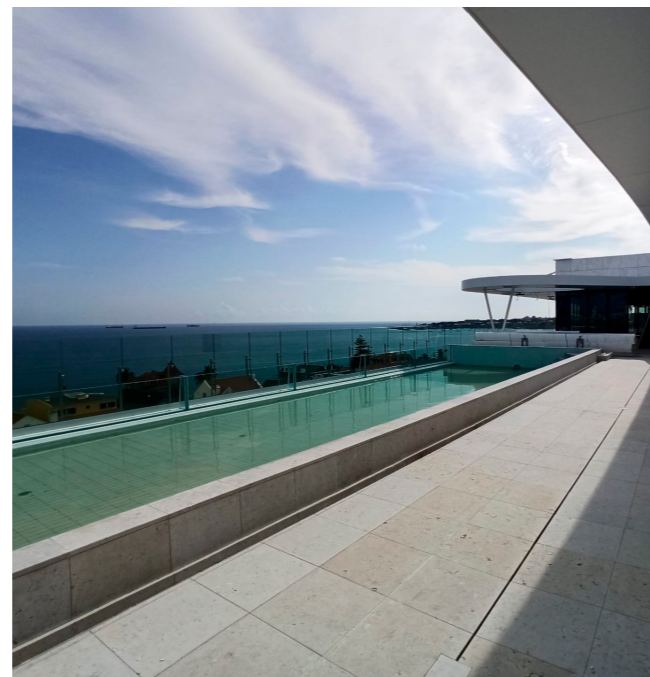
VHM is responsible for the coordination and supervision of the construction work.



## SANA Evolution Estoril

>>> Estoril

VHM performs the Construction Supervision of the Hotel belonging to the international hotel chain "SANA HOTELS", being in this case a 4 star hotel with 5 star facilities, the Evolution Cascais-Estoril. The building has a construction area of about 12.000m<sup>2</sup>, and the contract refers to phase 4, corresponding to the execution of finishings and special facilities of the hotel, consisting of two floors below ground level, for car parking, technical areas and support services to the hotel, and the 8 floors above ground level, for the use of guests where we highlight the 133 accommodation units, dining areas, swimming pools and spa.



*south/ island*

## Collective Housing Parque Atlântico

>>> Lisboa

Construction of a building for residential purposes and consists of 8 floors in total, distributed as follows: 2 floors for parking and technical area and 6 floors for housing. The construction work is located within the urban perimeter of the Parish Union of Carcavelos and Parede, in the Municipality of Cascais and VHM is responsible for the coordination and supervision of the work.



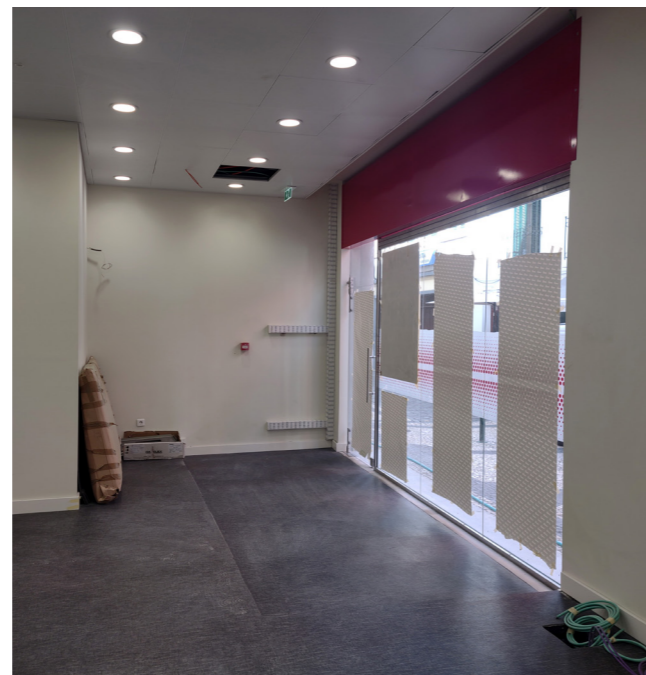
## Refurbishment João Távira Agency

### >>> Funchal

VHM is in charge of the Supervision and Safety Coordination of the requalification and alteration of floors -1, 0 and 1 of an existing building, located on one of the main arteries in the city of Funchal.

This is an intervention to remodel and adapt interior spaces, as well as to improve comfort and safety conditions and to install the future bank branch of Santander Bank, for a dimension of about 20 jobs.

The work provides respect for the architectural features of the property in terms of facades, and the project consists in the implementation of meeting rooms, pantry, storage, offices, sanitary facilities under the functionality of commercial banking counter, with a height of 8.20 meters and a construction area of 2,180.00 m<sup>2</sup>.



## south/ island

## Nordela Manufacturing Plant

### >>> Açores

The "Construction of the Nordela Manufacturing Centre" contract began on 12 May 2022, with supervision and safety coordination by VHM - Açores.

The work consists of the construction of a building called the Manufacturing Centre, which is divided on the ground floor into 4 distinct areas: the area A - Meat, B - Warehouse, C - Bakery/ Pastry Shop and D - Fish. The technical floor is for the workshop and technical platforms to support equipment. The first floor is for the social area and the cold storage plant. The technical floor 2 consists of two distinct zones defined as technical areas. The intervention will also include the paving of the areas surrounding the factory unit, with the construction of road accesses and parking.





# *30 years of* Dedication

International



Angola > Oman



## Holiday Home Caboledo

>>> Angola

The proposal follows a concept whose design allows to free the volumes, combining the different functionalities of the defined program, with a harmony between shapes, spaces and colours.

The principle of "full" and "empty" balances and establishes the "inside - outside" relationship, where the glazed planes narrow the physical distance between both, providing a close architectural dialogue between both areas.

The roof access staircase, the swimming pool and the outdoor dining area stand out from the rest of the composition through the variation in height and colour.

The interior composition is linear and balanced, clearly defining the private and social areas of the house, always taking into account the creation of convivial and leisure spaces.



Angola

## UNITEL - Customers and Agents Shop/ Building Support Centre Switching

>>> Huambo, Angola

VHM continues to provide Project services to the Telecommunications Company of reference in Angola - UNITEL.

The project for the new shop in the city of Huambo also includes in its functional programme, support areas for the local Switching Centre.

This new shop, which is implanted in one of the main areas of the city of Huambo, has a volumetry that stands out from the surroundings, and also addresses a new concept of service, with digital communication interfaces, promoting a spacious and illuminated space.



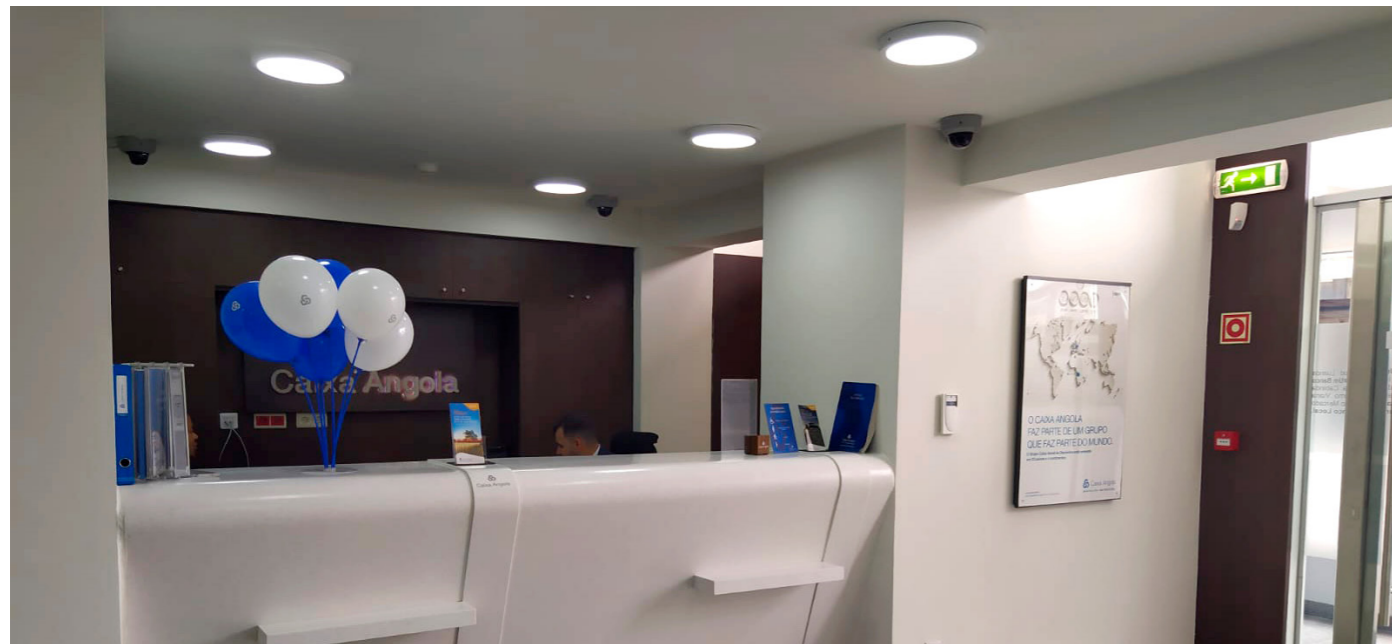
## Inauguration of Banco Caixa Geral Angola

>>> Lubango, Angola

Construction of the new Banco Caixa Geral Angola branch in Huambo was concluded at the beginning of April.

This new branch will allow BCGA to continue the process of reconverting its institutional image, which began in conjunction with VHM.

Contemplating the reconstruction and reconversion of an existing building in the noble area of Lubango, this new branch complies with the Bank's current institutional image, having used the most advanced technologies in terms of the various specialities in order to meet current comfort needs.



Angola

## Containment and Stabilization of the Ravine in Bairro dos Bragas

>>> Uíge, Angola

VHM started in May the supervision services of the work of Containment and Stabilization of the Ravine of Bairro dos Bragas, in Quimbele Municipality, Uíge Province.

The degradation of the ravines in Uíge Province is caused by erosion resulting from poor rainwater conduction, with the consequent progression of large ravines.

The objective of this project is to create a channel for the drainage of rainwater, to seal the ravines and to create a discharge area (dissipation basin), including all the earthworks involved in the construction of the channel.





## Amity International School

>>> Muscat

The construction of the Amity International School in Muscat, for which VHM is providing Oversight and Project Management services, continues at a good pace with 90% of the structure already complete and the masonry phase reaching about 50% of execution. This building, whose project was also developed by VHM, will give origin to an International School that will have Kindergarten, Primary and Secondary Schools, distributed by a total construction area of 27.000 m2 and whose opening is planned for September 2024.



Oman

## Oman Dental College

>>> Oman

The excavation works for the construction of the Oman Dental College started during May 2023, for which VHM is providing design, project management and supervision services. The new campus of the Oman Dental College will have a capacity for 500 students, with a gross construction area of approximately 15,000 m2 and around 140 treatment stations distributed between the University Clinic and the Graduate Clinic.



## La Vista Residential Commercial Building

>>> Baushar, Muscat

The structure and masonry works for the La Vista Residential and Commercial building, located in Baushar, Muscat, for which VHM is providing the design and supervision services, are currently underway. The multi-purpose building with a floor area of 942 m<sup>2</sup>, will consist of 2 basements, a commercial area on the ground floor, 1 floor of offices and 6 floors of housing, and will include a total of 48 flats, 8 shops and 8 offices, totalling a construction area of 8478 m<sup>2</sup>.



Oman

## Madinat Al Irfan Mosque

>>> Muscat

The excavation work for the construction of the Mosque located in Madinat al Irfan, Muscat Hills, for which VHM is providing design and supervision services, began during the month of February 2023. The building, with a gross construction area of 3,222.00 m<sup>2</sup> will consist of 2 floors and will have prayer rooms with a capacity of 1308 people.



>>>

>>>



**DESIGN YOUR FUTURE**



## **Portugal**

### **Sede // Head Office**

R. Júlio Dinis, 242 | P2 Sala 205 |  
4050-318 Porto

T. +351 226 079 110 | F. +351 226 008 707

[vhm.geral@vhm.pt](mailto:vhm.geral@vhm.pt)

[www.vhm.pt](http://www.vhm.pt)

